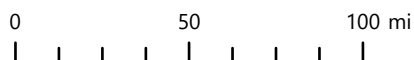


PROJECT PURPOSE

Replace culverts on Pt. Stephens Road and Pt. Stephens Spur Road



**JNU PT STEPHENS
CULVERT**

PROJECT NO. 0003285/SFHWWY00451

AT TEE HARBOR, ALASKA

LOCATED IN TOWNSHIP 40S, RANGE 64E, SECTION 13
USGS QUAD MAP JUNEAU B-3, 7.5
MINUTE SERIES

STATE OF ALASKA
DEPARTMENT OF TRANSPORTATION & PUBLIC FACILITIES
SOUTHCOAST REGION
6860 GLACIER HWY, JUNEAU, AK 99811

REGIONAL MAP

DATE: NOV. 2024

SHEET 1 OF 3



PROJECT PURPOSE

Replace culverts on Pt. Stephens Road and Pt. Stephens Spur Road



**JNU PT STEPHENS
CULVERT**

PROJECT NO. 0003285/SFHWWY00451

AT TEE HARBOR, ALASKA

LOCATED IN TOWNSHIP 40S, RANGE 64E, SECTION 13
USGS QUAD MAP JUNEAU B-3,
7.5 MINUTE SERIES

STATE OF ALASKA
DEPARTMENT OF TRANSPORTATION & PUBLIC FACILITIES
SOUTHCOAST REGION
6860 GLACIER HWY, JUNEAU, AK 99811

JUNEAU AREA MAP

DATE: NOV. 2024

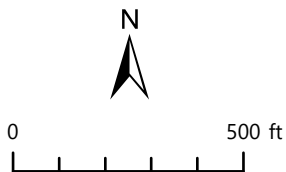
SHEET 2 OF 3



- Culvert to Replace
- Project Area

PROJECT PURPOSE

Replace culverts on Pt. Stephens Road and Pt. Stephens Spur Road



**JNU PT STEPHENS
CULVERT**

PROJECT NO. 0003285/SFHWHY00451

AT TEE HARBOR, ALASKA

LOCATED IN TOWNSHIP 40S, RANGE 64E, SECTION 13
USGS QUAD MAP JUNEAU B-3,
7.5 MINUTE SERIES

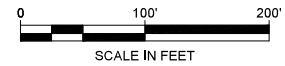
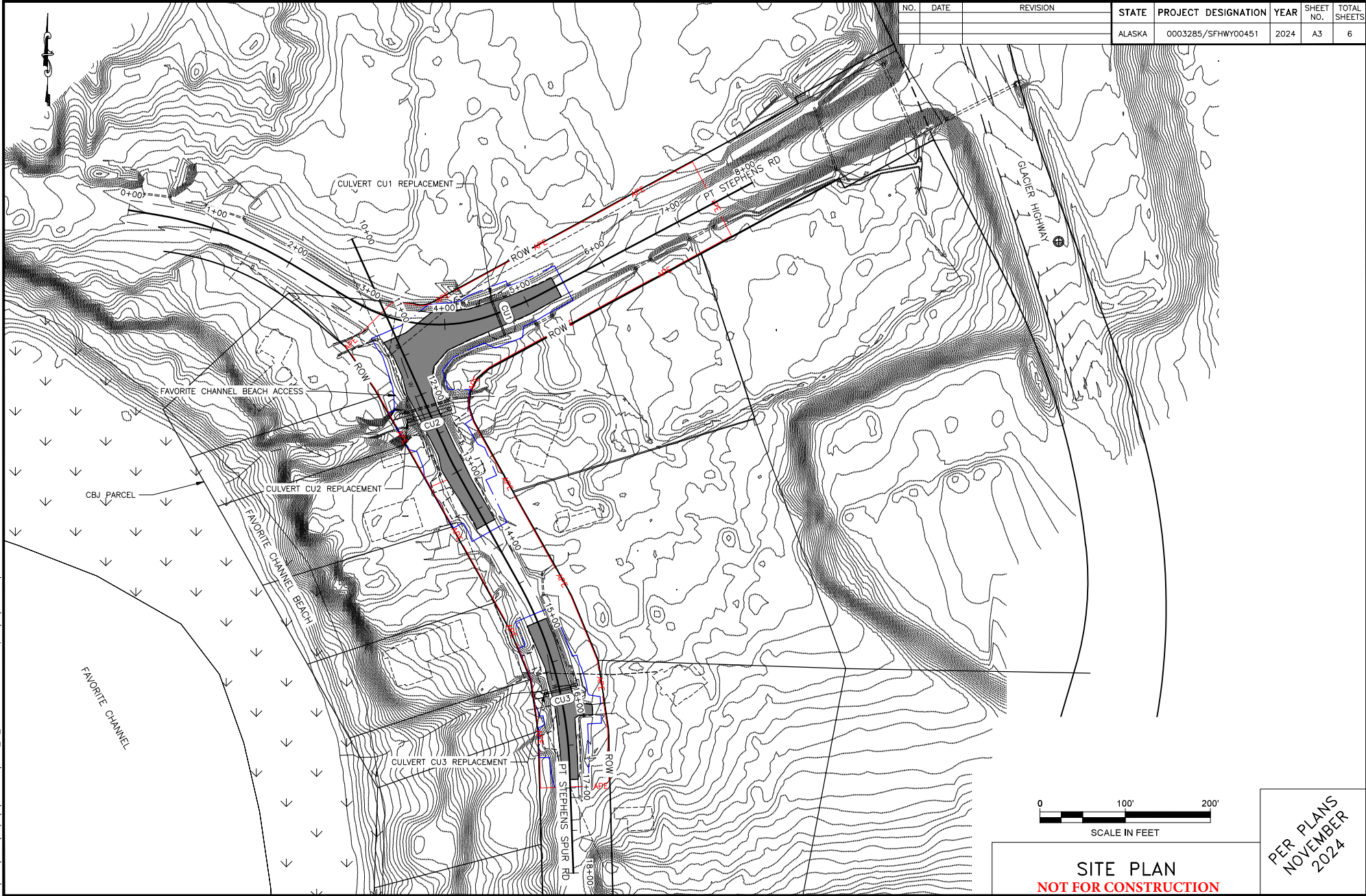
STATE OF ALASKA
DEPARTMENT OF TRANSPORTATION & PUBLIC FACILITIES
SOUTHCOAST REGION
6860 GLACIER HWY, JUNEAU, AK 99811

PROJECT AREA

DATE: NOV. 2024

SHEET 3 OF 3

NO.	DATE	REVISION	STATE	PROJECT DESIGNATION	YEAR	SHEET NO.	TOTAL SHEETS
			ALASKA	0003285/SFHwy00451	2024	A3	6

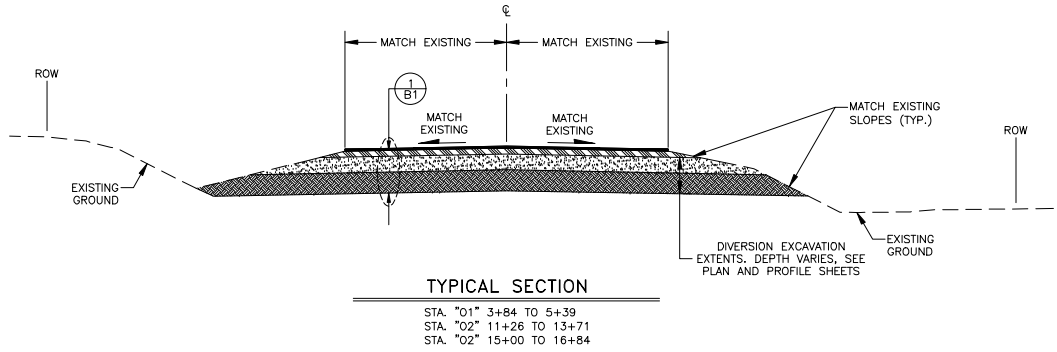


SITE PLAN
NOT FOR CONSTRUCTION

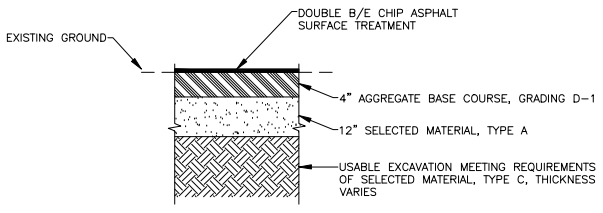
PER PLANS
NOVEMBER
2024

PLANS DEVELOPED BY: MICHAEL BAKER INTERNATIONAL, AECC 03, 3800 C STREET SUITE 900, ANCHORAGE, AK 99503 (907) 273-1600
C:\Users\Public\m\bp\p\3\Users\9599\00451_A3_SitePlan-A3-Site Plan FRI, Nov/15/24 04:24pm

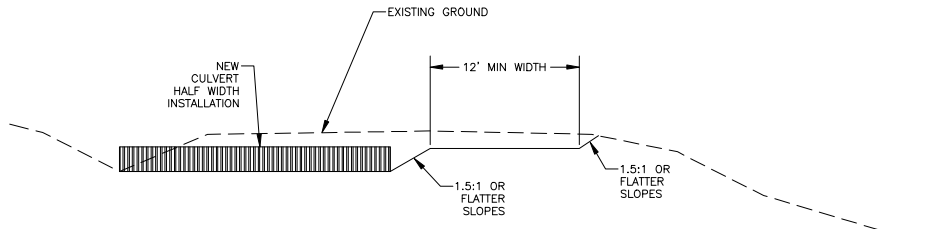
NO.	DATE	REVISION	STATE	PROJECT DESIGNATION	YEAR	SHEET NO.	TOTAL SHEETS
			ALASKA	0003285/SFHwy00451	2024	B1	6



TYPICAL SECTION
 STA. "01" 3+84 TO 5+39
 STA. "02" 11+26 TO 13+71
 STA. "02" 15+00 TO 16+84



1 ROADWAY SECTION
 NOT TO SCALE



HALF WIDTH DIVERSION TYPICAL SECTION

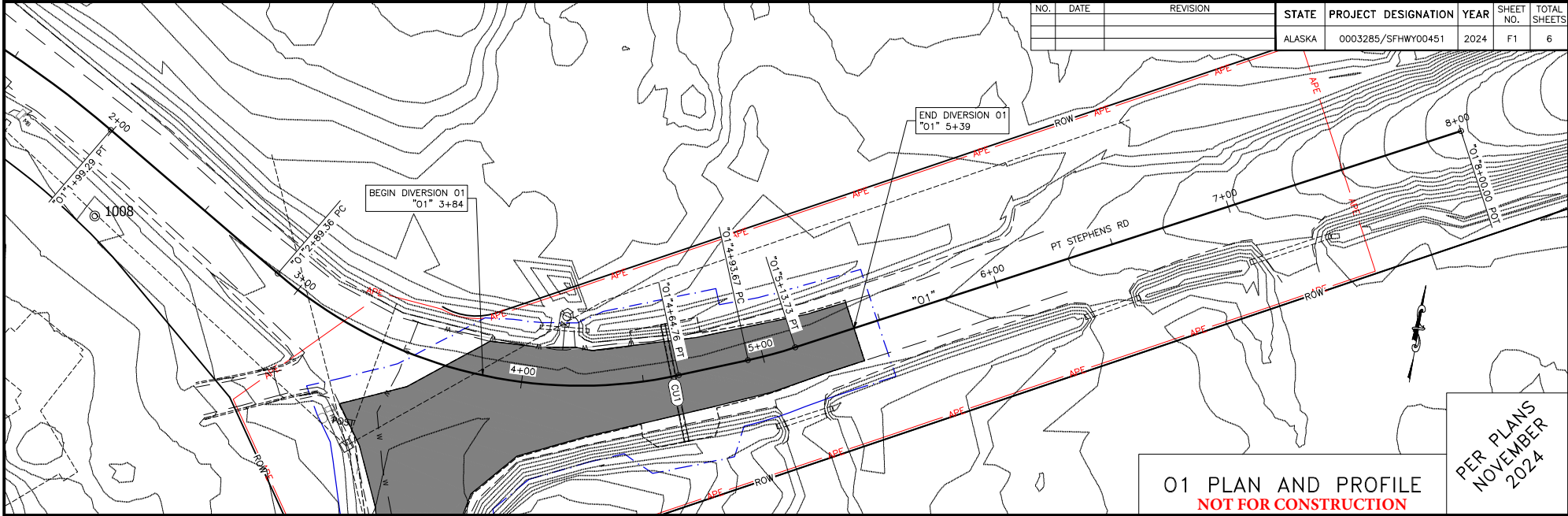
405.2001.0000 APPLICATION RATES	
COMPONENT	APPLICATION RATE
CRS-2P ASPHALT FOR B AGGREGATE LAYER	243 GAL/TON
CRS-2P ASPHALT FOR E AGGREGATE LAYER	0.6 GAL/SY
CRS-2P ASPHALT FOR SURFACE TREATMENT	0.55 GAL/SY
GRADE B AGGREGATE FOR SURFACE TREATMENT	55 LB/SY
GRADE E AGGREGATE FOR SURFACE TREATMENT	30 LB/SY

TYPICAL SECTION
NOT FOR CONSTRUCTION

PER PLANS
 NOVEMBER
 2024

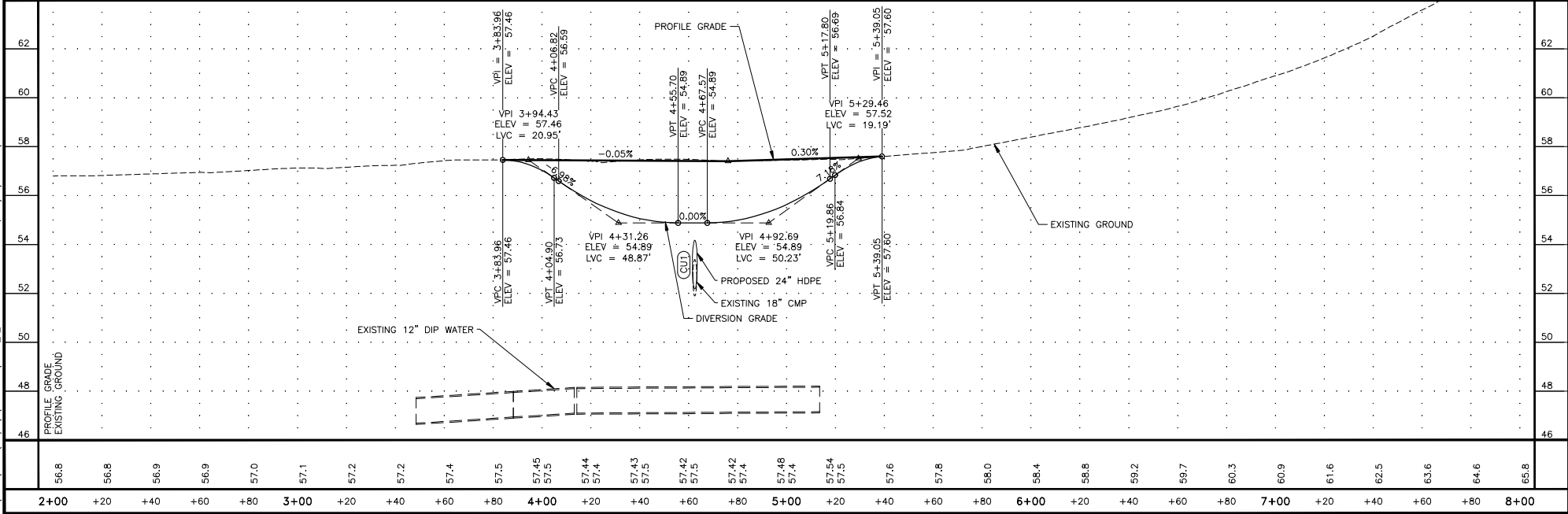
PLANS DEVELOPED BY: MICHAEL BAKER INTERNATIONAL, AECC 03, 3900 C STREET, SUITE 900, ANCHORAGE, AK 99503 (907) 273-1600
 C:\Users\Public\m\m\p\p\3\3\m\m\7\7\9\9\9\9\00451-B-TypSec-Fri, Nov 15/24 04:24pm

NO.	DATE	REVISION	STATE	PROJECT DESIGNATION	YEAR	SHEET NO.	TOTAL SHEETS
			ALASKA	0003285/SFHWO0451	2024	F1	6



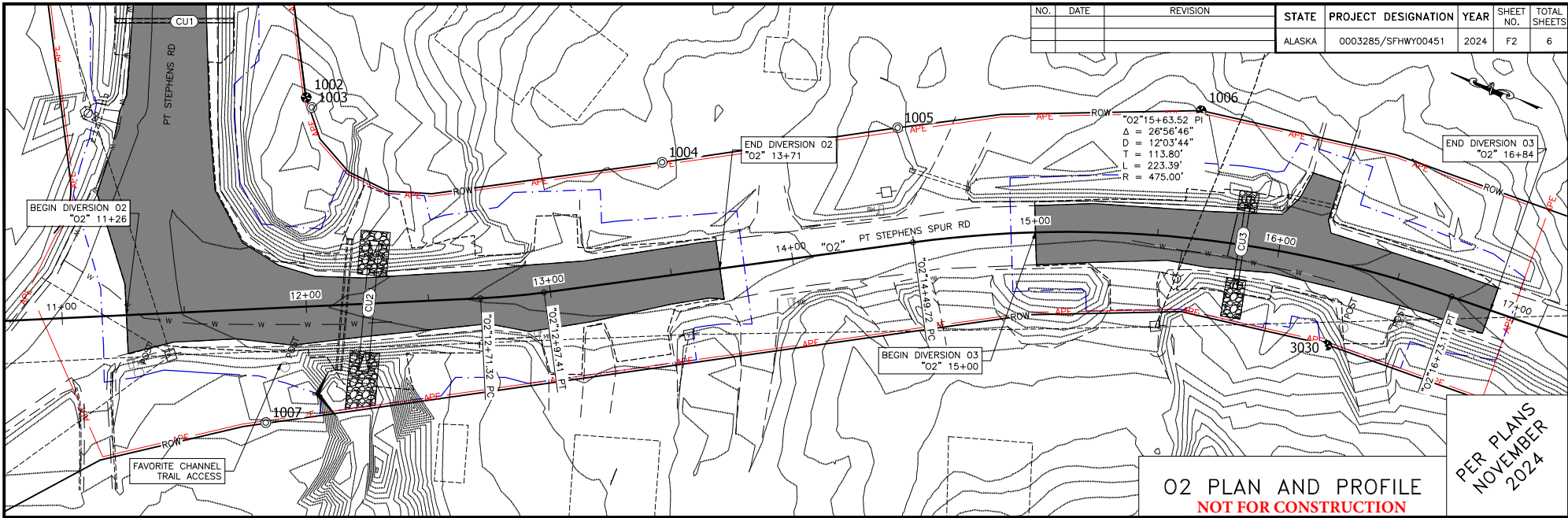
O1 PLAN AND PROFILE
NOT FOR CONSTRUCTION

PER PLANS
 NOVEMBER
 2024



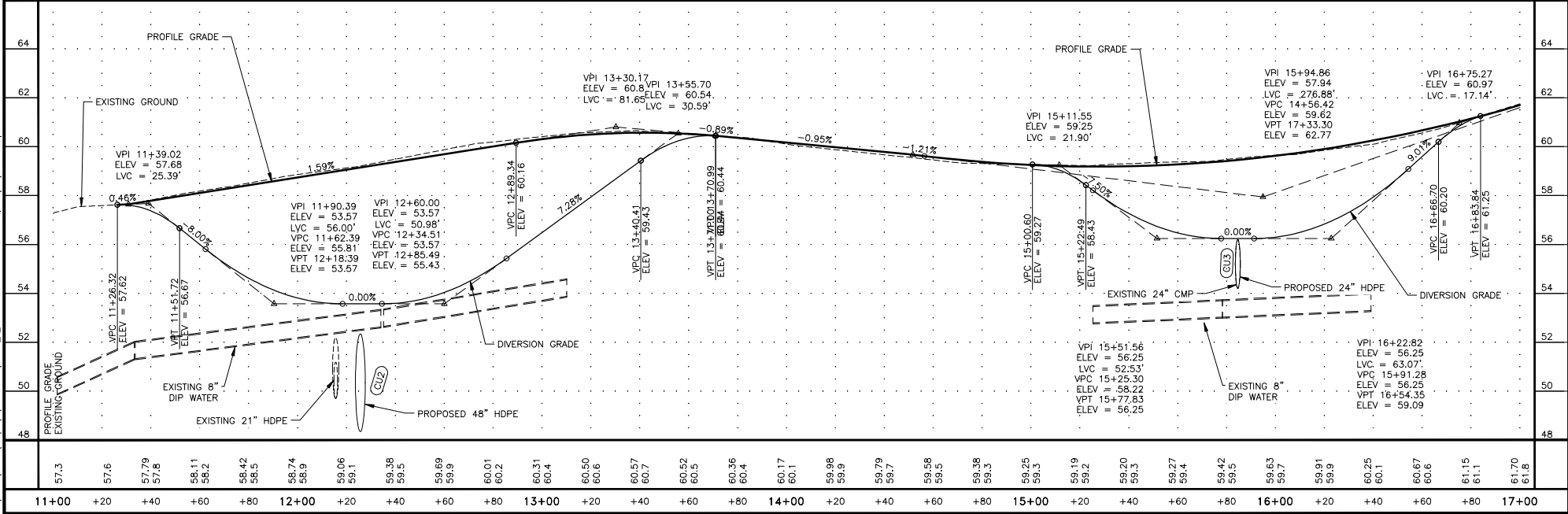
PLANS DEVELOPED BY: MICHAEL BAKER INTERNATIONAL, AEC0103, 3800 C STREET SUITE 900, ANCHORAGE, AK 99503 (907) 273-1600
 C:\Users\Public\mbl\p\0451_F_P&P-2-10-000-8-10-000_Fig_Nov19/24_0424.dgn

NO.	DATE	REVISION	STATE	PROJECT DESIGNATION	YEAR	SHEET NO.	TOTAL SHEETS
			ALASKA	0003285/SFHWHY00451	2024	F2	6



O2 PLAN AND PROFILE
NOT FOR CONSTRUCTION

PER PLANS
NOVEMBER
2024



PLANS DEVELOPED BY: MICHAEL BAKER INTERNATIONAL, AEC03.D, 3800 C STREET, SUITE 900, ANCHORAGE, AK 99503 (907) 273-1600
 C:\Users\Public\OneDrive\Documents\00451_F_P&P-11+00.00-17+00.00_Ftr_Nov/15/24_04x24r.mxd